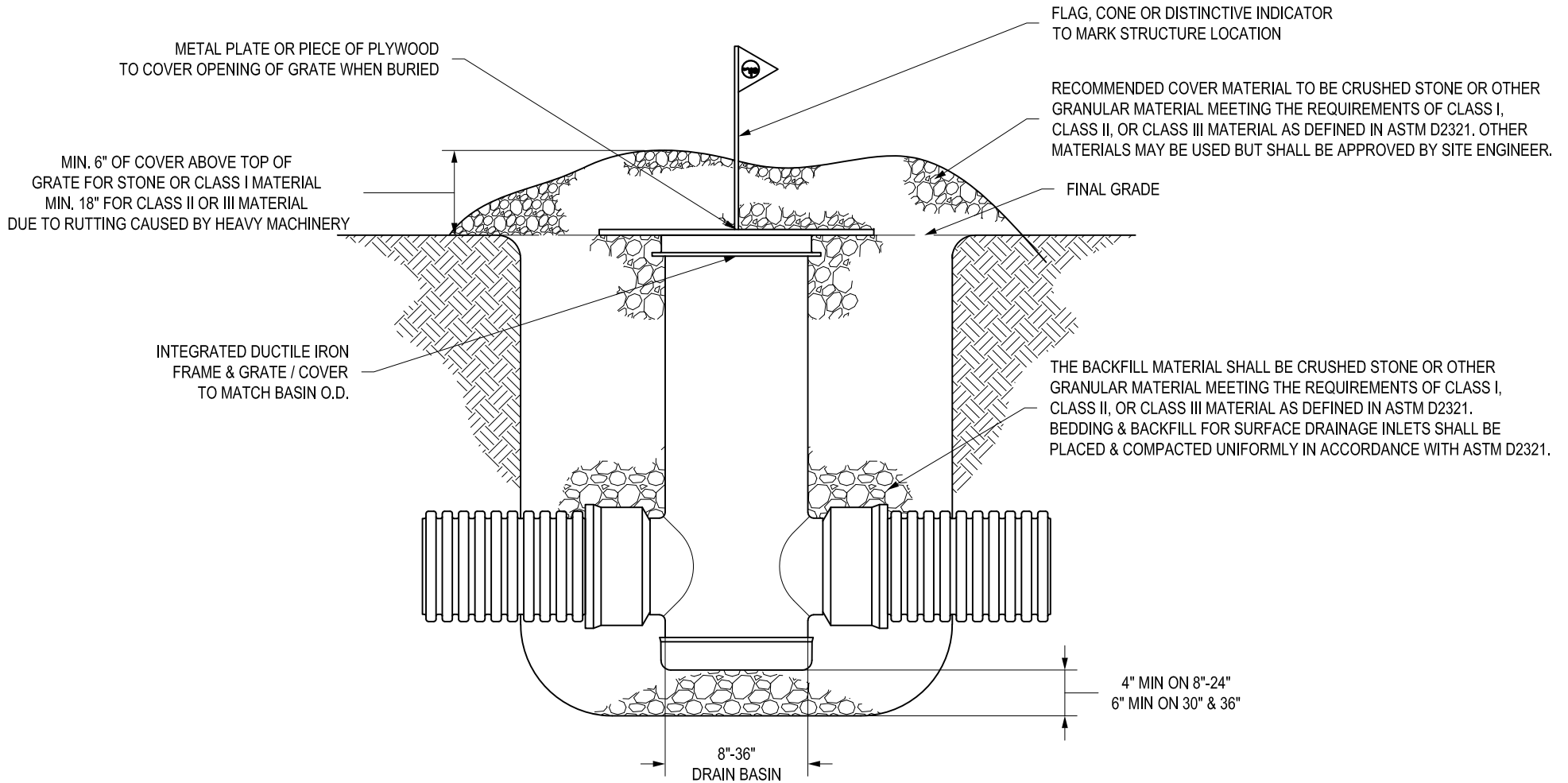


NYLOPLAST DRAIN BASIN CONSTRUCTION PROTECTION DETAIL - OPTION 1

(BURIED STRUCTURE DETAIL)



- 1 - GRATES/SOLID COVER SHALL BE DUCTILE IRON PER ASTM A536 GRADE 70-50-05.
- 2 - FRAMES SHALL BE DUCTILE IRON PER ASTM A536 GRADE 70-50-05.
- 3 - DRAIN BASIN TO BE CUSTOM MANUFACTURED ACCORDING TO PLAN DETAILS. RISERS ARE NEEDED FOR BASINS OVER 84" DUE TO SHIPPING RESTRICTIONS. IN THE EVENT A BASIN IS DAMAGED DURING CONSTRUCTION, RISER SECTIONS CAN BE USED FOR FIELD REPAIRS.
- 4 - COVER MATERIAL SHALL CONFORM TO MANUFACTURER'S RECOMMENDATION OR APPROVED BY SITE ENGINEER. MATERIAL SHALL BE ABLE TO SUPPORT VEHICLE TRAFFIC AND SHALL COVER THE STRUCTURE A MINIMUM OF 6".

THIS PRINT DISCLOSES SUBJECT MATTER IN WHICH NYLOPLAST HAS PROPRIETARY RIGHTS. THE RECEIPT OR POSSESSION OF THIS PRINT DOES NOT CONFER, TRANSFER, OR LICENSE THE USE OF THE DESIGN OR TECHNICAL INFORMATION SHOWN HEREIN. REPRODUCTION OF THIS PRINT OR ANY INFORMATION CONTAINED HEREIN, OR MANUFACTURE OF ANY ARTICLE HEREFROM, FOR THE DISCLOSURE TO OTHERS IS FORBIDDEN, EXCEPT BY SPECIFIC WRITTEN PERMISSION FROM NYLOPLAST.

©2007 NYLOPLAST

DRAWN BY	NMH	MATERIAL
DATE	10-02-18	
APPD BY	NMH	PROJECT NO./NAME
DATE	10-02-18	
DWG SIZE	A	SCALE 1:20 SHEET 1 OF 1

	3130 VERONA AVE BUFORD, GA 30518 PHN (770) 932-2443 FAX (770) 932-2490 www.nyloplast-us.com	
	TITLE DRAIN BASIN CONSTRUCTION PROTECTION DETAIL	
DWG NO.	7001-110-552	REV A

NYLOPLAST DRAIN BASIN CONSTRUCTION PROTECTION DETAIL - OPTION 2

(EROSION CONTROL STRUCTURE DETAIL)

DUCTILE IRON GRATE OPTIONAL DURING CONSTRUCTION. FILTER FABRIC CAN BE APPLIED UNDER GRATE TO FILTER STORM RUNOFF

PERFORATED RISER SECTION PER MANUFACTURER'S PERFORATION SCHEDULE UNLESS NOTED OTHERWISE (RISER SECTION HEIGHTS CAN VARY)

SAFETY OR EROSION CONTROL FENCING TO MARK STRUCTURE DURING CONSTRUCTION

FILTER FABRIC RECOMMENDED TO LIMIT MIGRATION OF FINES INTO THE SYSTEM

RIP RAP OR STONE AROUND PERFORATED RISER SECTION DURING CONSTRUCTION TO ALLOW FOR FILTRATION OF STORM RUNOFF

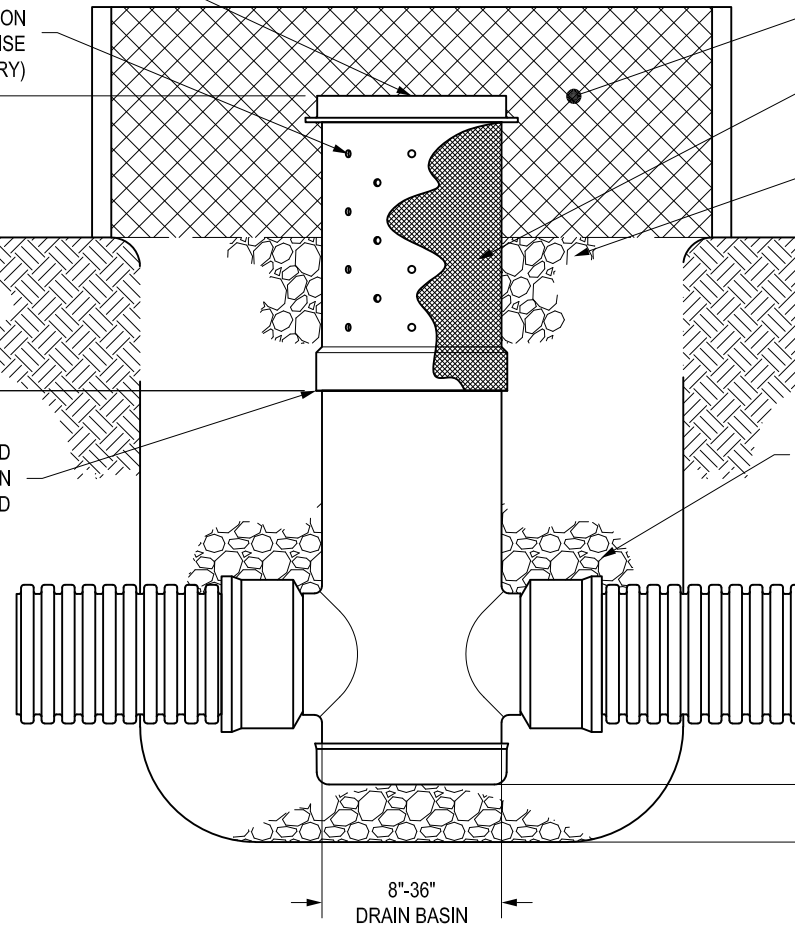
24" TYPICAL

12"

GRADE

RISER SECTION IS NOT TO BE GLUED SO BASIN CAN MATCH GRADE WHEN FINAL INSTALLATION IS REQUIRED

THE BACKFILL MATERIAL SHALL BE CRUSHED STONE OR OTHER GRANULAR MATERIAL MEETING THE REQUIREMENTS OF CLASS I, CLASS II, OR CLASS III MATERIAL AS DEFINED IN ASTM D2321. BEDDING & BACKFILL FOR SURFACE DRAINAGE INLETS SHALL BE PLACED & COMPACTED UNIFORMLY IN ACCORDANCE WITH ASTM D2321.



4" MIN ON 8"-24"
6" MIN ON 30" & 36"

8"-36"
DRAIN BASIN

- 1 - PERFORATED RISER SECTION IS TO BE REMOVED AND REPLACED WITH SOLID RISER FOLLOWING THE FINAL SITE GRADING. IF THE PERFORATED RISER SECTIONS ARE DAMAGED DURING CONSTRUCTION, THEY CAN BE EASILY REPLACED WITH MINIMAL DAMAGE TO MAIN BASIN BODY / BASE SECTION.
- 2 - FRAMES & GRATES/SOLID COVERS ARE TO BE INSTALLED ONCE EROSION CONTROL STRUCTURE IS NO LONGER NEEDED.
- 3 - PERFORATION SCHEDULE WILL MEET NYLOPLAST SPECIFICATIONS OUTLINED IN DRAWING 7001-110-008 UNLESS NOTED OTHERWISE.
- 4 - DRAIN BASIN TO BE CUSTOM MANUFACTURED ACCORDING TO PLAN DETAILS. RISERS ARE NEEDED FOR BASINS OVER 84" DUE TO SHIPPING RESTRICTIONS. IN THE EVENT A BASIN IS DAMAGED DURING CONSTRUCTION, RISER SECTIONS CAN BE USED FOR FIELD REPAIRS.

THIS PRINT DISCLOSES SUBJECT MATTER IN WHICH NYLOPLAST HAS PROPRIETARY RIGHTS. THE RECEIPT OR POSSESSION OF THIS PRINT DOES NOT CONFER, TRANSFER, OR LICENSE THE USE OF THE DESIGN OR TECHNICAL INFORMATION SHOWN HEREIN. REPRODUCTION OF THIS PRINT OR ANY INFORMATION CONTAINED HEREIN, OR MANUFACTURE OF ANY ARTICLE HEREFROM, FOR THE DISCLOSURE TO OTHERS IS FORBIDDEN, EXCEPT BY SPECIFIC WRITTEN PERMISSION FROM NYLOPLAST.

©2007 NYLOPLAST

DRAWN BY	NMH	MATERIAL
DATE	10-02-18	
APPD BY	NMH	PROJECT NO./NAME
DATE	10-02-18	
DWG SIZE	A	SCALE 1:20 SHEET 1 OF 1



3130 VERONA AVE
BUFORD, GA 30518
PHN (770) 932-2443
FAX (770) 932-2490
www.nyloplast-us.com

TITLE	CONSTRUCTION EROSION CONTROL DRAIN BASIN DETAIL		
DWG NO.	7001-110-553	REV	A